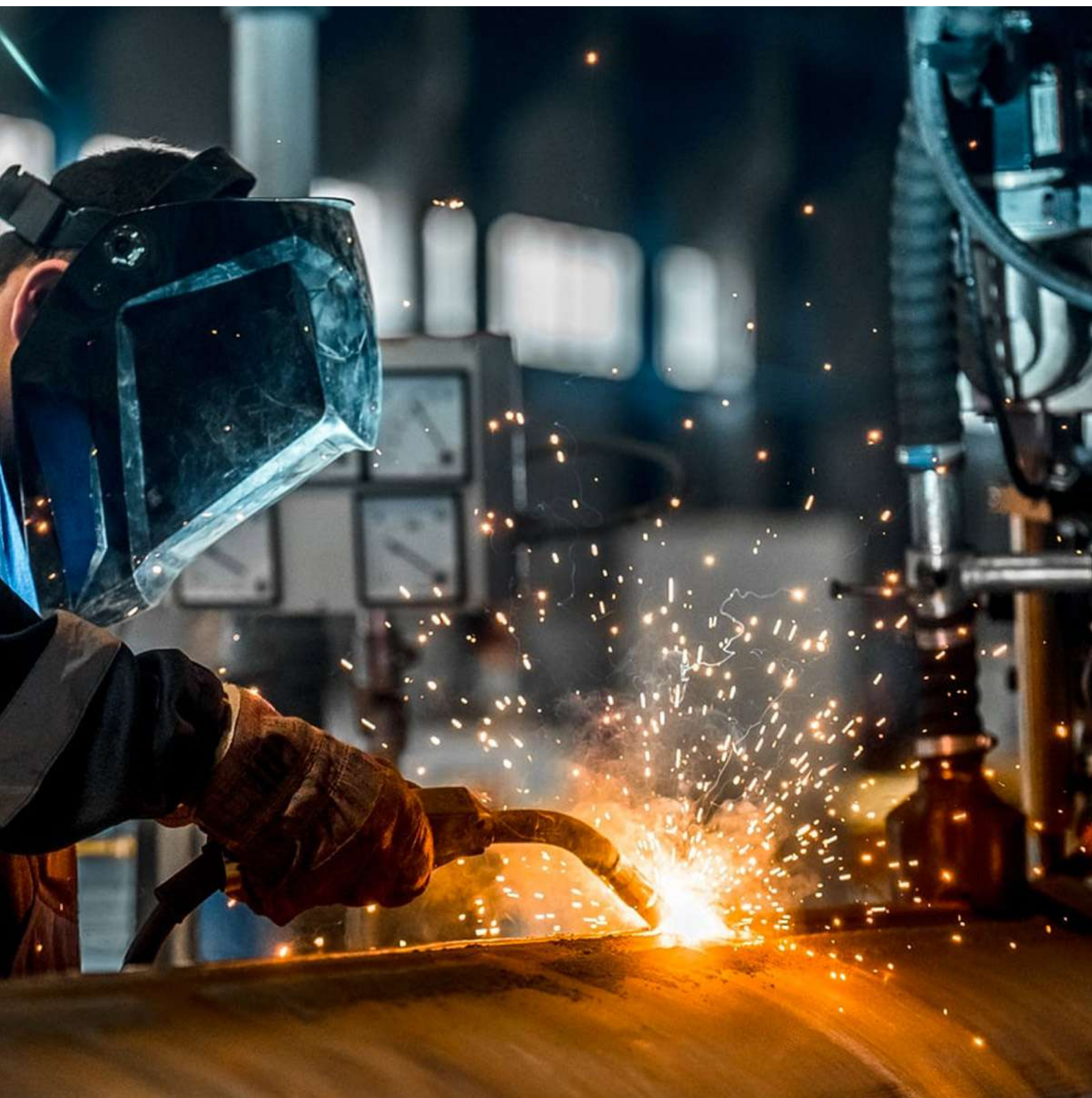




www.mountireglobal.com

MOUNTIRE
MACHINERY & COMPONENTS PVT.LTD.





About Us



We at Mountire are proud of strong reputation and diverse experience of a decade we have earned as industry leader in Heavy Engineering, Industrial, Material Handling Equipments and Earthmoving Attachments in Indian as well as International standards. We have joined hands with RK Heavy Engineering to strengthen our product range and to provide superior quality attachments to our elite customers with improving efficiency, productivity and sustainability. We are engaged and specialized in PEB & Structural Steel Fabrication following very methodical approach.

Mountire is now synonymous with quality and reliability. This has given us the privilege to provide our expertise on many large and exciting projects across the world. All our products are designed and built for maximum performance and productivity. The equipment we make, meets the highest industry standards and has been tested to endure the harsh conditions.

12+

Years of Experience

1000+

MT/Month Capacity

25+

Satisfied Clients

10+

Acres Campus

150+

Diverse Workforce

>60%

Export Business

Vision

Bring inspiration and innovation to every process of manufacturing with highest standard of quality, workmanship, customer satisfaction. Create value additions; driven by innovation; technology & efficiency for the construction and fabrication industry.

Mission

We endeavor to exceed customer expectations. What takes courage, grit, perseverance and skill is the ability to stay at the TOP. Offering efficient propositions that enable speed of execution. And above all, the health and safety of all our employees, customers, and contractors.

Quality

We are an ISO: 9001:2015 Certified Company and We tend to follow the quality management principles. We have developed work plans and quality objectives to meet our best quality requirement for our customers. By timely reviewing and monitoring the production process, we follow the quality control norms. This helps us to upgrade our quality process to extreme levels. Our manufactured products goes through various tests procedures in order to deliver the product with the utmost quality. We always conforms to all governing procedures and statutory regulations.



This is to Certify that the Management System of

Mountire Machinery & Components Private Limited

Reg Add :332/5, Nehru Nagar West, Kalapatti Road,
Coimbatore 641014, TN, India

has been found to conform to the Quality Management System standard:

ISO 9001:2015

This certificate is valid for the following scope of operations:

**Manufacturer of Earthmoving Machinery and Buckets &
Attachments, Construction, Mining, Agriculture and Material
Handling Equipment, Structural Steel Fabrication**

Certificate No.: 09110595A

Date of initial registration

21 January 2022

Date of this Certificate

21 January 2022

Recertification Due

20 January 2025

Accreditation

This Certificate remains valid subject to satisfactory surveillance audits.



ICL/FM-001/REV06



Director



For verification and updated information concerning the present certificate visit to www.iclcert.com

This certificate is property of Integral Certification (P) Ltd. and shall be returned immediately when demanded.

Integral Certification (P) Ltd.

301, U-60 (3rd Floor), Shakar Pur, Laxmi Nagar, Delhi-110092

E-mail: info@iclcert.com Website : www.iclcert.com

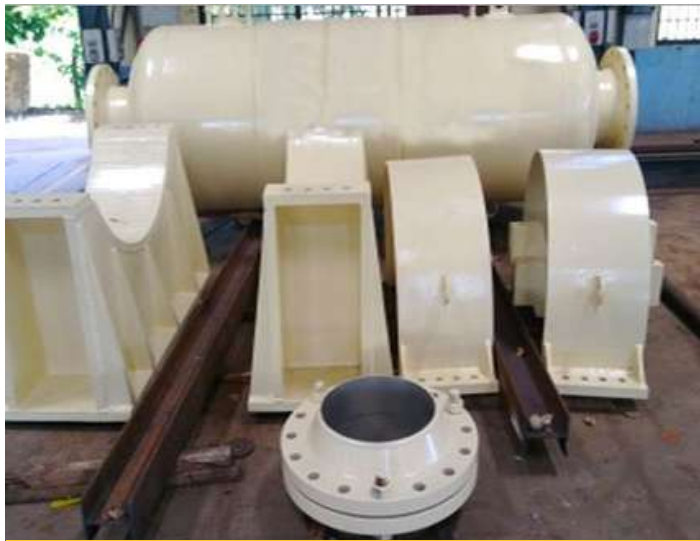
Contact No. : +91-9319332223



Bucket Elevator



Venturi Diffuser



Pressure Vessel



Strainer Vessel



Tank Assembly



Cement & Water
Weighter



Hopper Silo



Dust Collector



Sulfur Storage Vessel



Heavy Tonner Assembly



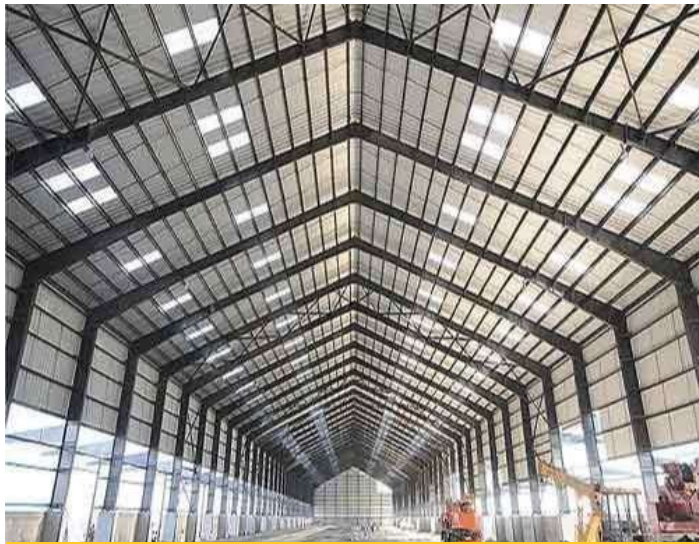
Primary Gas Cooler



RTO Storage Tank



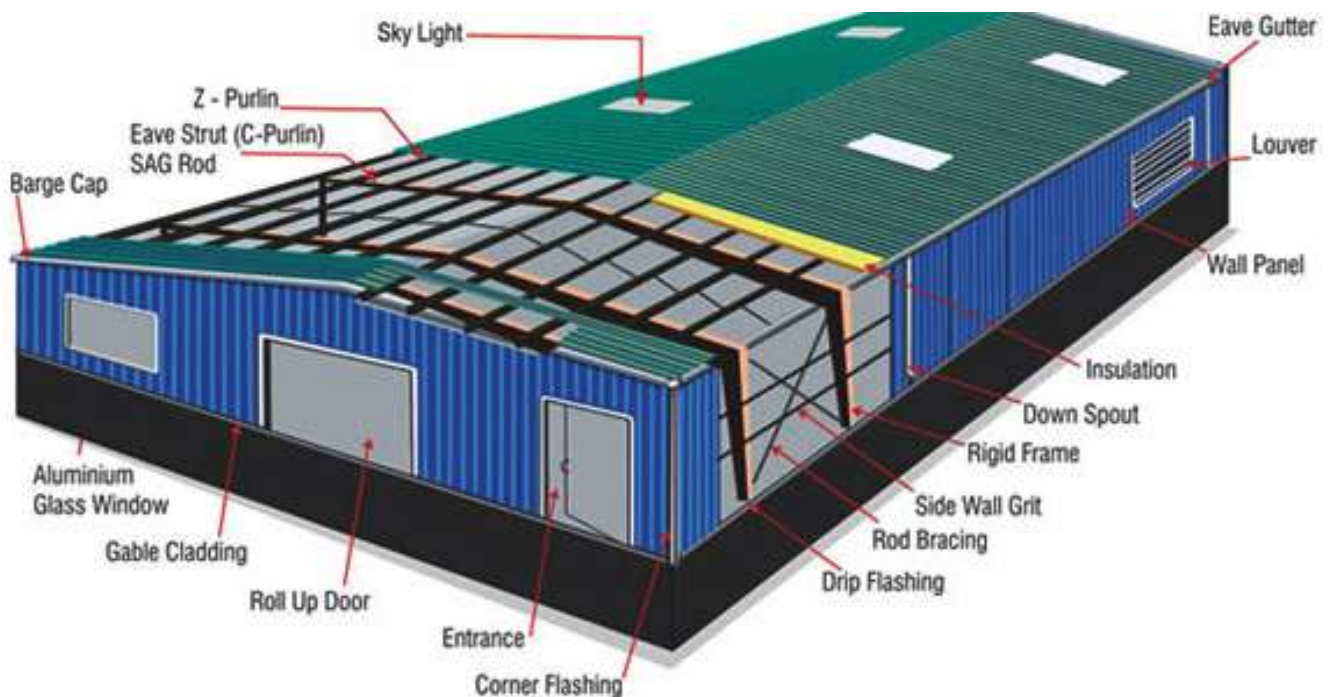
Structural Fabrication



PEB Fabrication



Structural Steel
Fabrication





Material Handling Equipments



Component Trolleys



Material Handling Trolley



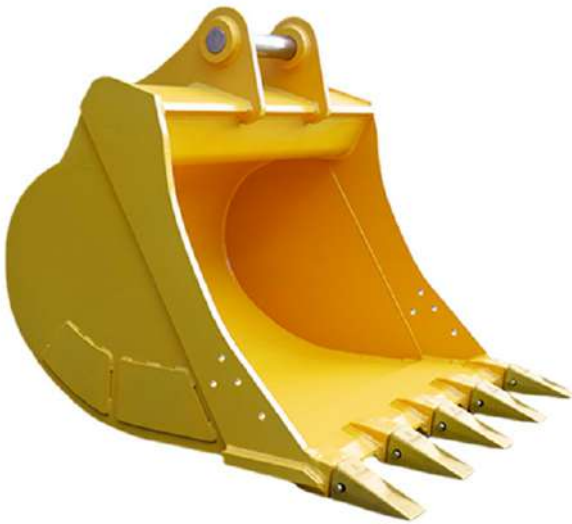
Industrial Trolley



Multi Purpose
Rake Trolley



Excavator Attachments



Digging Bucket



Hydraulic Tilt Bucket



Grab



Pallet Forks



Skid Loader Attachments



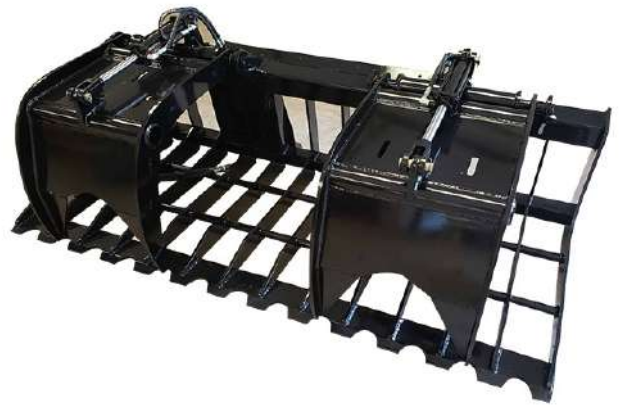
4 in 1 Bucket



Rock Bucket



Tree Puller



Grapple Bucket



At present we have state-of-the-art manufacturing unit spread over 10 acres at a very strategic location which is near to Chennai main port. We are one of India's leading and fast growing heavy engineering & fabrication manufacturer.

Welding Standards: All our welding engineers are well qualified & experienced enough to work and maintain as per the major international welding standards: AWS D 1.1, AWS D14.3, CWISP 3.1, ASME SEC XI, AS / NZS 1554, EN 15609 & EN 15614, DTW 13952. We also follow customer's specified welding quality based on their requirement.

Covered Area

50000
Sq.Ft

Open Gantry Bay

58000
Sq.Ft

Concrete Yard

125000
Sq.Ft

Covered Area Shed

75000
Sq.Ft



CNC Turning 12" - CAMPRO



CNC Milling 1100- CAMPRO



CNC Double Column – STARVISION



CNC Turning 24" - CAMPRO



Laser Cutting Machine



Hydraulic Pressbrake
Machine



Bending Machine



Radial Drilling Machine



Hydraulic Iron Worker
Machine



Hydraulic Shearing
Machine



Plasma Cutting
Machine



Pull Through Welding
Machine



Punching Machine



Rolling Machine



Press Brake Machine



Vertical Slotting
Machine



Production Shed 1



Open Free Zone



Open Production Area



Blasting & Painting
Shed

Esteemed Customers

apollo
TYRES



Shriramepc
Engineering the future



FLSMIDTH
INDIA

TOSHIBA

L&T Construction
Buildings & Factories



PAT
SERVING THE INDUSTRY SINCE 1973

VEIP

fives cail

भाविनि
BHAVINI

HEAT AND CONTROL



PKM

sierra

UCON



THE RESIDENCY
Group of Hotels

BGR
ENERGY



VOLTECH
EXCELLENCE IN ENGINEERING PRODUCTS & SERVICES

SCHWING
Stetter



SCHAEFFLER
WUK FAG

PROLEC

NTT
POMAS
GROUP

BEUMERGROUP

MOSEB ENGINEERING

DÜRR

KILLOUGHERY

WK



Supplying Worldwide



Mountire Machinery & Components PVT. LTD.



Corporate Office & Mfg. Plant

Survey No- 94/B, Pulleri Panchayat,
Keerapakkam, Thirukalukundram Tk,
Chengalpet, Chennai, TN - 603109. INDIA

Registered Address

332/5A, Nehru Nagar West,
Kalpatti Road, Coimbatore,
TN - 641014. INDIA



+91 9943848989

+91 7909663414